

Pass-through letterbox
for mounting in
masonry
BKV 611-4/1-0

Page 1



Product description

Pass-through letterbox according to DIN EN 13724 modular system, for masonry walls (dry masonry), made of hot-dip galvanized sheet steel, 0.8 mm, in inclined 45° model, extendable from 290 - 440 mm, can be combined horizontally and vertically.

Rear removal door, opening downwards, with cylinder lock, nameplate and inspection window. With connecting screws.

Specifications

Nameplate size (mm) W x H:	70 x 21	70 x 21	70 x 21
Dimensions (mm) W x H x D:	400 x 100 x 290-440	400 x 200 x 290-440	400 x 300 x 290-440

Article information

Article designation	Article description	Colour/Material	KGSAP article no.
BKV 611-4/1-0 W	Pass-through letterbox for mounting in masonry	White	B 200034133-00
BKV 611-4/2-0 W	Pass-through letterbox for mounting in masonry	White	B 200034134-00
BKV 611-4/3-0 W	Pass-through letterbox for mounting in masonry	White	B 200034135-00



Pass-through letterbox
for mounting in
masonry
BKV 611-4/1-0

Page 2

Accessories

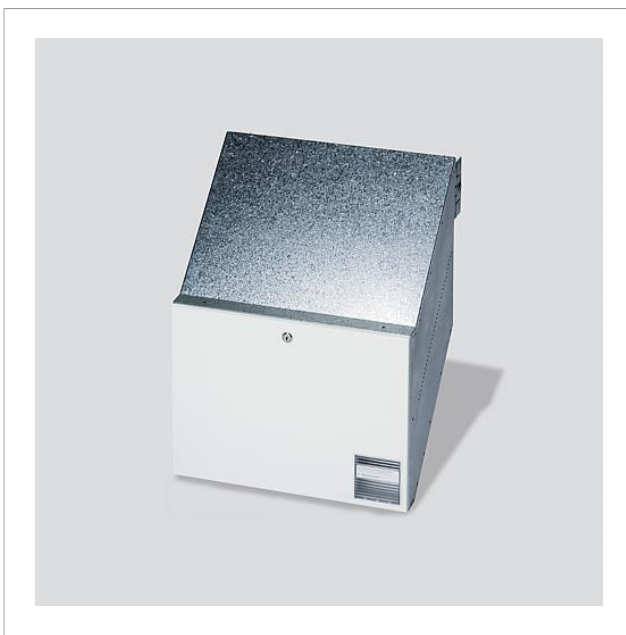
Article designation	Article description	Colour/Material	KG SAP article no.
Vario 611 W	Touch-up applicator	White	0 210007116-00

Spare parts

Article designation	Article description	Colour/Material	KG SAP article no.
BKV 611-...	Viewing window for removal door	Clear glass	E 200019641-00
BKV/RGA/RGF 611-...	Spare lock	Others	E 200029520-00

Pass-through letterbox
for mounting in
masonry
BKV 611-4/1-0

Page 3





Pass-through letterbox
for mounting in
masonry
BKV 611-4/1-0

Page 4

BKV 611-3/... and BKV 611-4/... Siedle-Vario Pass-through letter box for mounting in masonry	Product information	818 kB	Download
	Additional information	109 kB	Download